

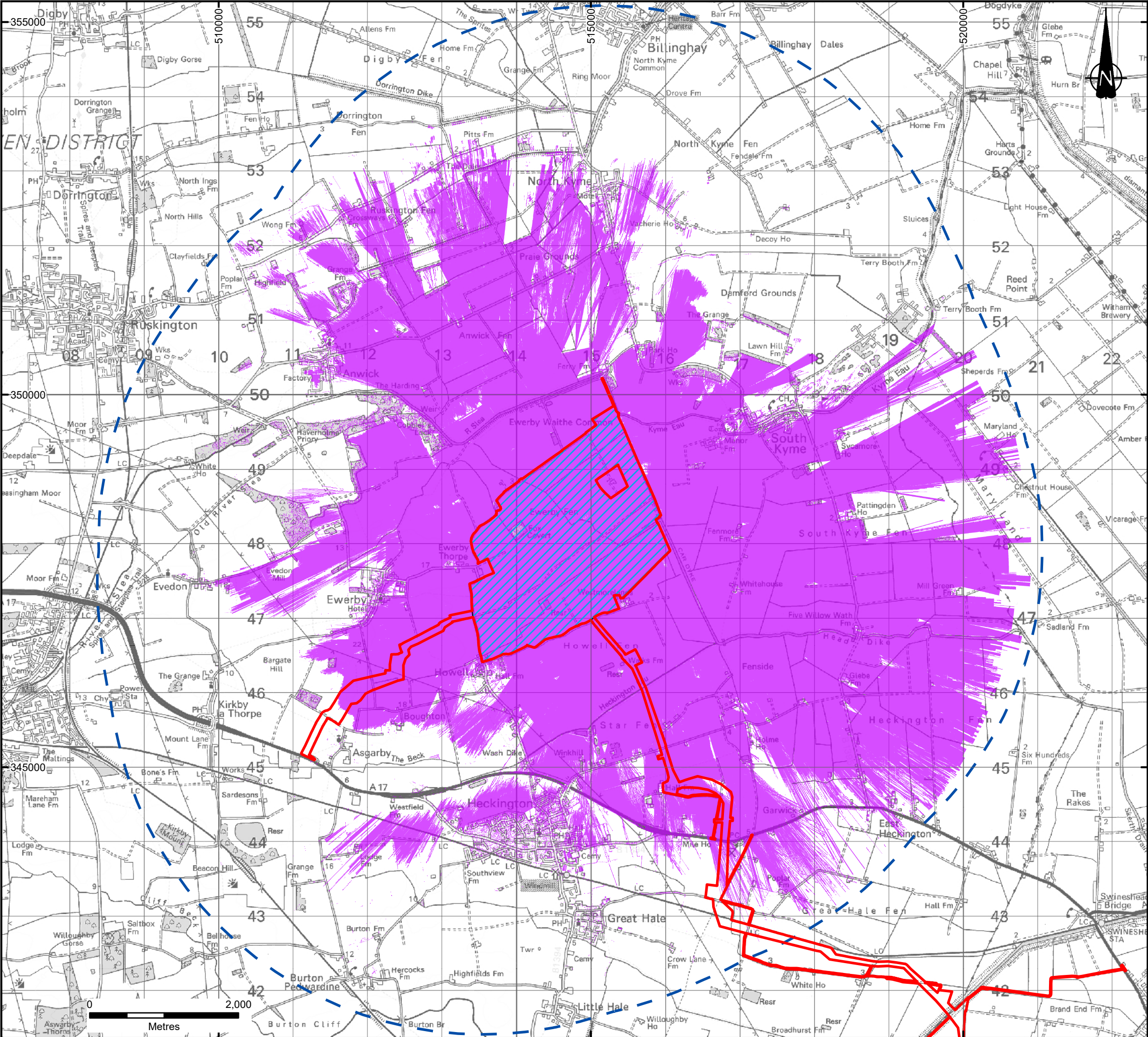


BEACON FEN ENERGY PARK

Planning Inspectorate Reference: EN010151

Figure 13.4 Zone of Theoretical Visibility
Document Reference: 6.4 ES Volume 3, 6.4.71
April 2025





KEY

- DCO Order Limits
- Solar Array Area
- 5km Buffer
- ZTV

Notes:

Excluding the DCO Order Limits, boundaries shown are indicative.

DCO Order Limits provided by Ardent Management on 04/02/2025.

Generated using a 2m resolution Digital Terrain Model (DSM) which is based on DSM data from the Environment Agency, incorporating the proposed Solar PV panels modelled across the site to a maximum anticipated heights of 3.9 m and 3.5 m. Locations of respective panel heights were determined by the most updated layout received by the Client.

© Crown copyright and database rights 2025 Ordnance Survey AC0000808122

Proposed scheme is derived from the Solar Array Area with selective reference points included from approximately every 100m on a grid across the full extent of the Solar Array Area.

ZTV raster data was calculated using QGIS 3.22.8 Visibility Analysis tool with observer eye 1.8 m above ground.

1	FIRST ISSUE	06/03/25	CP	CS	SA
REVISION	DETAILS	DATE	DRAWN	CHKD	APPD
CLIENT					
BEACON FEN ENERGY PARK LTD					
PROJECT					
BEACON FEN ENERGY PARK					
DRAWING TITLE					
FIGURE 13.4 ZONE OF THEORETICAL VISIBILITY					
DRG No.		REV	SUIT. CODE		
ST19595-194		1	--		
DRG SIZE		SCALE	DATE		
A3		1:50,000	06/03/2025		
DRAWN BY		CHECKED BY	APPROVED BY		
CP		CS	SA		

